

Squilchuck State Park - State Championship

Sunday June 2nd 2024



The Address

Squilchuck State Park | Wenatchee
2805 Mission Ridge Rd, Wenatchee, WA 98801

Pre-Ride

Saturday from 2:00 pm to 5:00 pm and on race day from 7:00 am to 8:30 am. Girl Boss Ride Saturday 3:00 pm at GB Flag. We recommend that all riders pre-ride the course, ride with your race plate and ride with others!

Neutral Support

Race day Neutral Support is provided by Alex and Izzy with Trek Redmond. Neutral support mechanics will be on hand to provide free mechanical assistance for any student-rider with a bicycle emergency on Saturday. Student-riders are expected to come to each race with a fully functional, race ready bicycle. Thank you Alex and Izzy!

Camping

Camping is located up the road from Squilchuck at Mission Ridge Ski Hill. Camping is open to both tent and vehicle camping. There is a lodge with bathrooms, but no showers. The camping is great for vehicles, as it is a dirt lot, but we recommend a sleeping pad or two for tent campers.

There will be a shuttle from Mission Ridge to Squilchuck, but it will not be able to take bikes. There will be a drop off system for bikes at the venue. Once the main lot is full, an overflow parking lot nearby is available, which the shuttle will be picking and dropping off at.

Note: if you are planning on camping both Friday and Saturday nights, you need to put them in your cart as separate entities.

Volunteer Sign-up

We wouldn't be able to put our races together without the ample help from volunteers. **We need 4 volunteers from each team** to make this race happen! Please visit our sign-up [here](#). Extra sweeps needed for State Championship races too!

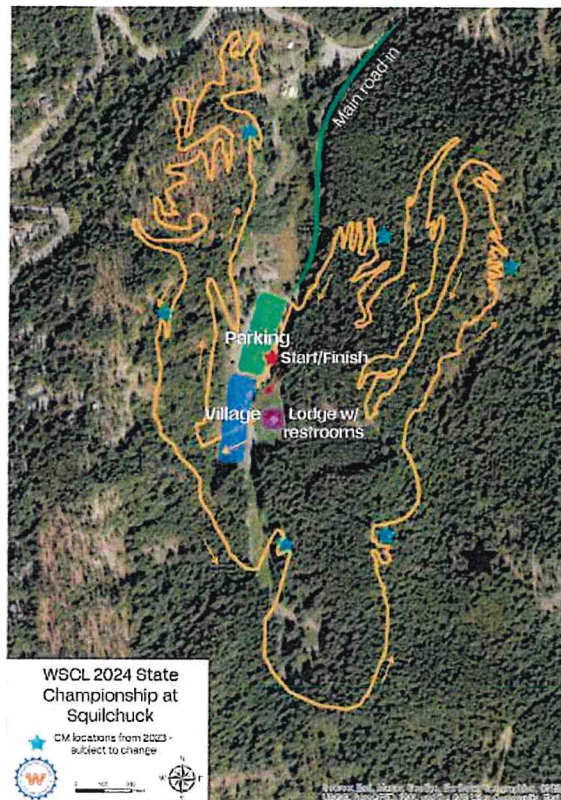
Food Truck

We will be joined by Blue Skies Food Shack on Sunday to serve a variety of meals, including Thai and Korean BBQ. There is also a dinner option on Saturday night at Mission Ridge that you can purchase [here](#).

Don't Forget

Dogs are allowed as long as **kept on a leash**
Always wear a helmet when on a bicycle - especially coaches!
No drones or helmet/bike mount cameras

Please bag up your trash, there will be a dumpster



595 feet elevation | 5.8 miles

The course starts on a pavement road climb till getting to single track trail up above the village. On trail, there is a small descent towards the bottom of the parking lot until you reach the base and start a gradual flowy climb up _____. There is rolling trail from here on out, with some dirt road sections. Roots and rocks throughout. Making way to a fun flowy switchback section before a fast descent that is the most technical section of the route, with some tight switchbacks and rocks.

Lap Breakdown

Varsity & JV	_____	3 Laps
High School II	_____	2 Laps
Adv. Middle	_____	
High School I	_____	1 Lap
8th Grade	_____	
7th Grade	_____	
6th Grade	_____	
Open	_____	

